



Retail at The Gathering

07.03.2024

PROJECT # 12063.00

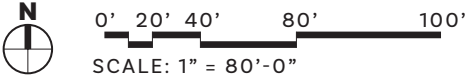
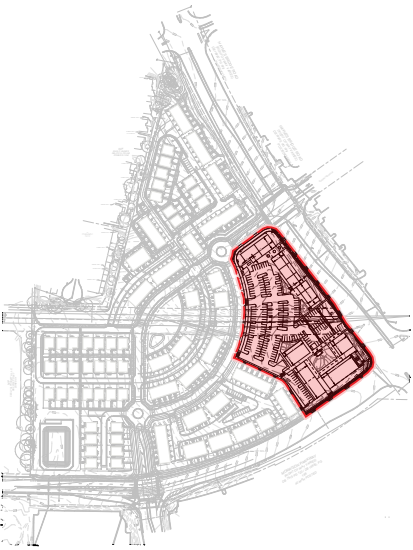
RETAIL AT THE GATHERING



BUILDING NAME	AREA - INTERIOR	AREA - EXTERIOR	FFE
Building A	6,850 SQFT		
Suite A-1	3,275 SQFT		1094'
Suite A-2	3,575 SQFT		1096'
Building B	7,300 SQFT	920 SQFT	
Suite B-1	2,600 SQFT		1096'
Suite B-2	2,350 SQFT		1094'
Suite B-3	2,350 SQFT		1092'
Building C	4,500 SQFT	1,000 SQFT	1087'
Suite C-1	1,250 SQFT	250 SQFT	
Suite C-2	1,000 SQFT		
Suite C-3	2,250 SQFT	750 SQFT	
Building D	3,780 SQFT	900 SQFT	1079'
Building E	8,400 SQFT	1,280 SQFT	1079'
Building F	7,250 SQFT	1,020 SQFT	1079'
Suite F-1	3,625 SQFT		
Suite F-2	3,625 SQFT	1,020 SQFT	
Building G	5,400 SQFT		1080'
Total	43,480 SQFT	5,120 SQFT	

(all square footages are approximate values)

PARKING TYPE	COUNT
90°	143 Spaces
Compact	18 Spaces
ADA	6 Spaces
EV	8 Spaces
Street (Parallel)	6 Spaces
Total	181 Spaces + 21 Bicycle Spaces

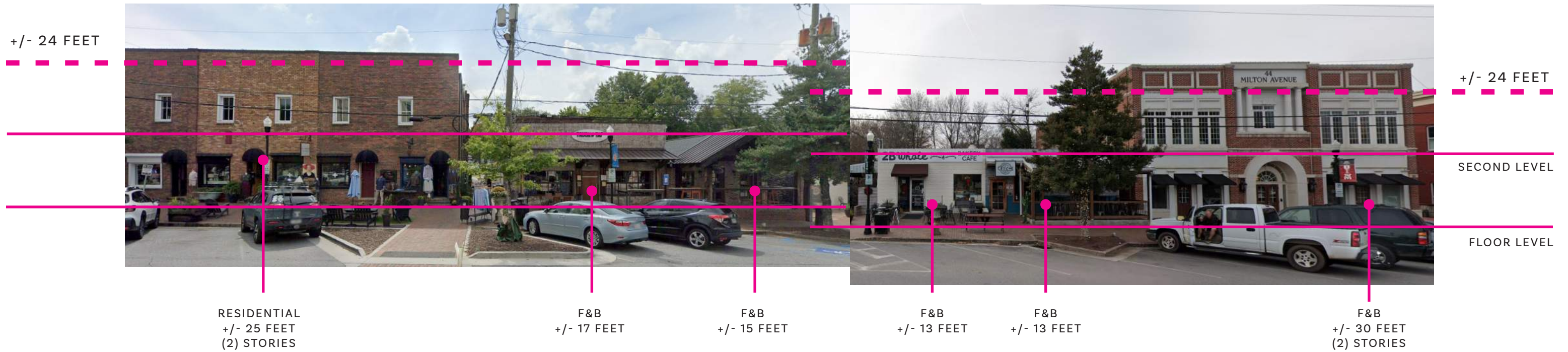


- KEY NOTES**
- 1 Outdoor Seating Area
 - 2 Proposed Sculpture/Art Location
 - 3 Outdoor Central Amenity Space
 - 4 Outdoor Pavilion
 - 5 Bicycle Racks
 - 6 Alpha Loop
 - 7 Retaining Wall
 - 8 Community Connection (Speed Table)





2 Alpharetta Highway



1 Milton Ave



+/- 24 FEET

SECOND LEVEL

FLOOR LEVEL

2 South Main Street

F&B
+/- 30 FEET
(2) STORIES

F&B
+/- 22 FEET



+/- 24 FEET

SECOND LEVEL

FLOOR LEVEL

1 North Broad Street

F&B
+/- 22 FEET

F&B
+/- 22 FEET
(2) STORIES

F&B
+/- 25 FEET



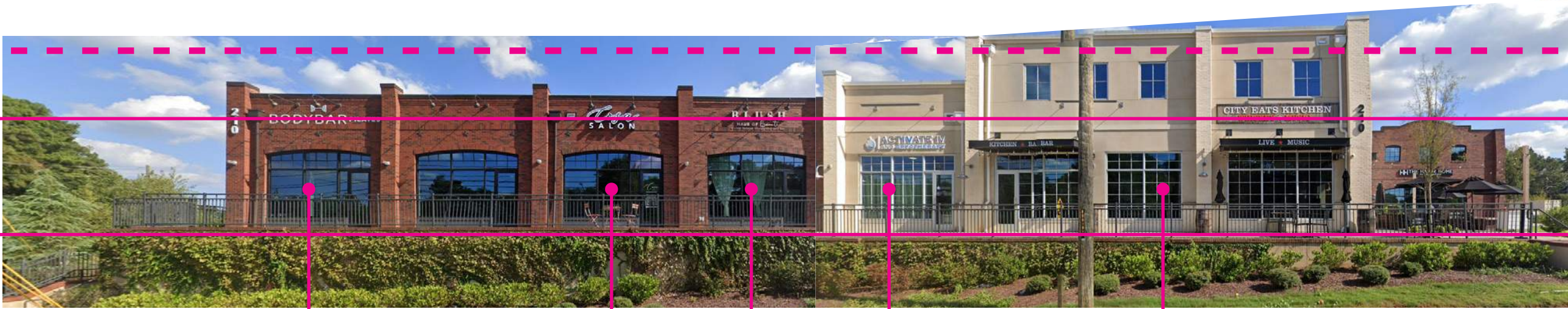
2 North Point Parkway



1 North Point Parkway

The Maxwell

+/- 24 FEET



SECOND LEVEL

FLOOR LEVEL

GYM
+/- 18 FEET

RETAIL
+/- 18 FEET

RETAIL
+/- 18 FEET

MEDICAL SERVICES
+/- 20 FEET

F&B
+/- 25 FEET
(2) STORIES

3 Alpharetta Highway

+/- 24 FEET



SECOND LEVEL

FLOOR LEVEL

F&B
+/- 30 FEET
(2) STORIES

RETAIL
+/- 30 FEET
(2) STORIES

2 Alpharetta Highway + South Main Street

+/- 24 FEET



SECOND LEVEL

FLOOR LEVEL

RETAIL
+/- 25 FEET
(2) STORIES

F&B
+/- 20 FEET

F&B
+/- 20 FEET

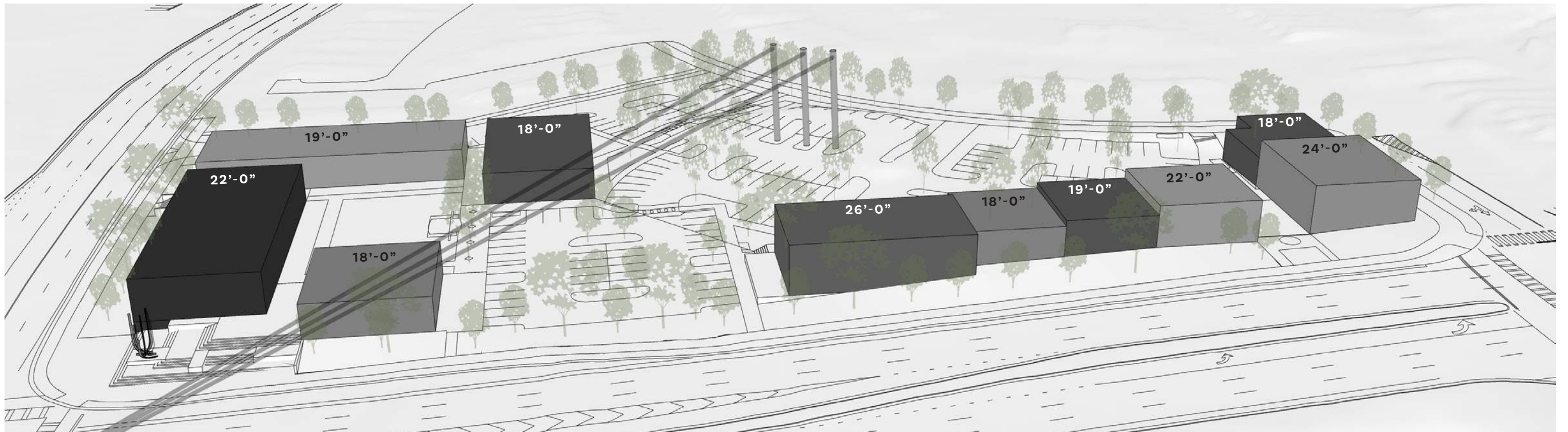
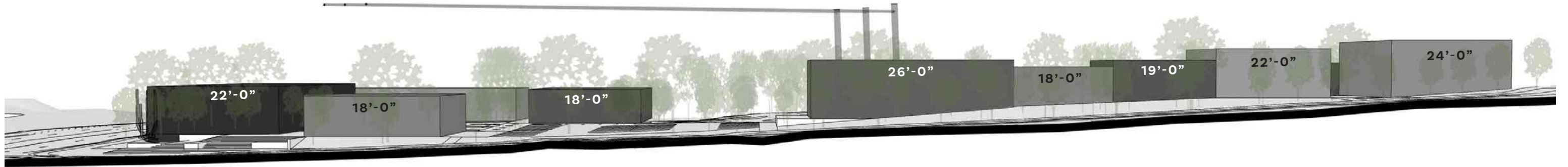
F&B
+/- 18 FEET

MEDICAL SERVICES
+/- 18 FEET

GROOMER
+/- 18 FEET

1 South Main Street

Varied Heights 18'-0" to 26'-0"









THANK YOU